

Forensic Demo and Training Centre

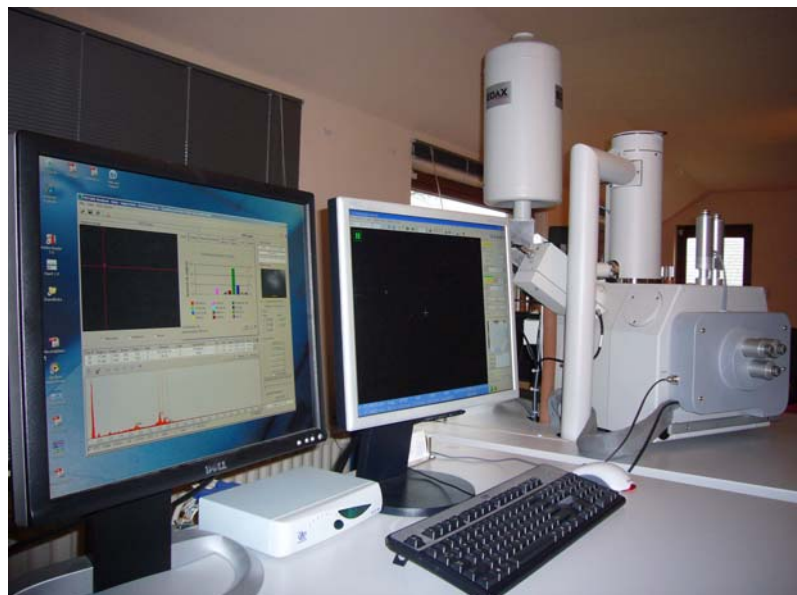
The FEI Forensic Scanning Electron Microscope (SEM) and the Gun Shot Residue (GSR) SEM are flexible platforms that allow forensic specialists to focus on microscopic traces of evidence using imaging, comparison, and X-ray microanalysis (EDS) techniques.

The Gunshot Residue Analysis System, a dedicated application oriented solution designed to analyze and characterize particles generated during firing a gun, is the result of a joint development effort between FEI Company and Eastern Analytical, our partner in Forensic hard and software development.

FEI is proud to feature worldwide sales and service of the GSR analysis systems along with dedicated Forensic platform development and manufacturing.

FEI has its own Forensic Demo and Training Center located in the Belgium Ardennes. The center is located at approximately 2 hrs car drive from Eindhoven, the Netherlands. The center is equipped with a Quanta 600 MKII with EDAX Genesis XM4i system and Bruker AXS Quantax200 system with SDD, both running FEI GSR Magnum software. The center is used for demonstrations, training and development of hard- and software related to Forensic Platforms.

On regular basis GSR user meetings are organized so forensic researchers from all over the world can meet and discuss about several issues.



Address:

Eastern Analytical SPRL
Haute Levée 18
Stavelot B-4970, Belgium
Tel : +32 (0)80 86 36 39
Fax : +32 (0)80 86 36 40
Email: masonkn@gunshotresidue.com
www.gunshotresidue.com

**Travel direction:**

The Forensic Demo and Training Center is located in Stavelot, Belgium, near to Malmedy, 80 km south of Maastricht Airport (Netherlands).

If you arrive from the direction of Maastricht (NL), drive south in direction of Liège (B) along the A2/E25. Just before Liège (B), take the A3/E40 in direction of Verviers (Aachen). **Be careful at this fly over.** After 15 km, take the A27/E42 to Verviers / Sankt-Vith. Continue this road for 22 km, until the exit Malmedy. Take the N68 from Malmedy to Stavelot. In Stavelot keep to the right and follow the road to Trois-Ponts. At the first traffic lights, turn right, in direction of Francorchamps (N622).

This road is very steep (15%) and about half way down the road, you will find the entrance of the Forensic Demo and Training Center on your right hand site. The centre is painted in a bright orange color.

